

With no onward chain! With a pleasant outlook and close to the Freeman Hospital, a three bedroom mid-terrace, ideally located at Castledene Court, South Gosforth. Originally constructed in 1991, Castledene Court is conveniently situated to give access to the Freeman Hospital, South Gosforth Metro Station, the greenery provided by Paddy Freeman's Park and provides excellent road links to the City and beyond.

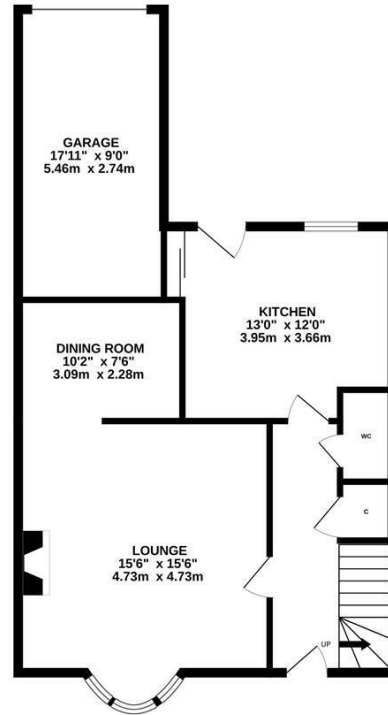
The accommodation briefly comprises: entrance hall with stairs to first floor, under-stairs storage cupboard and downstairs WC; lounge with walk in bay and feature fireplace, open to dining room; kitchen with fitted units, work surfaces, sliding door storage and rear door access to the garden. The first floor landing gives access to: three bedrooms, bedroom one with walk in bay and access to an en-suite shower room, bedrooms two and three also with fitted storage; bathroom complete with three piece suite.

Externally, a pleasant front town garden and to the rear, a partially enclosed patio garden, laid to paving with a raised decked seating area, driveway providing off-street parking, leading to the garage measuring almost 18ft, providing further off-street parking/storage. With a fully boarded loft space including pull down ladder, early viewings are advised to avoid disappointment.

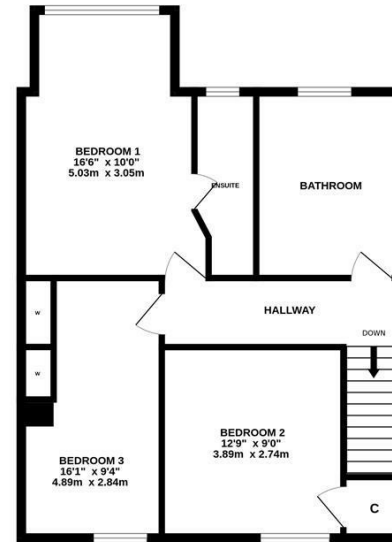
Three Bedroom Mid-Terrace | 1,451 Sq ft (134.8m²) | Lounge to Dining Room | Kitchen | Downstairs WC | 1st Floor Family Bathroom & En-Suite | Front Town Garden | Rear Patio Garden with Raised Decking | Driveway & Garage | No Onward Chain | Leasehold with 963 Years Remaining | Council Tax Band D | EPC: C

EPC - C

GROUND FLOOR
758 sq.ft. (70.4 sq.m.) approx.



1ST FLOOR
693 sq.ft. (64.4 sq.m.) approx.



TOTAL FLOOR AREA: 1451 sq.ft. (134.8 sq.m.) approx.
Whilst every attempt has been made to ensure the accuracy of the floorplan contained here, measurements of doors, windows, rooms and any other items are approximate and no responsibility is taken for any error, omission or mis-statement. This plan is for illustrative purposes only and should be used as such by any prospective purchaser. The services, systems and appliances shown have not been tested and no guarantee as to their operability or efficiency can be given.
Made with Metropix ©2025



Offers Over £315,000

IMPORTANT NOTE: These particulars and the descriptions and measurements herein do not constitute representation and whilst every effort has been made to ensure accuracy, this cannot be guaranteed.

